

# Anne Davies



# AUDIOLOGY



The **12<sup>th</sup>**

## Paediatric Assessment: A Refresher Course

An Introduction / Update for Behavioural Testing in Paediatric Audiology

### Comments from the 2018 course delegates

“The best learning environment I’ve been in,  
in a long time.”

“A great refresher with up-to-date guidance.”

“A very valuable and insightful few days,  
looking forward to implementing this knowledge.”

Course  
fee:  
**£298**

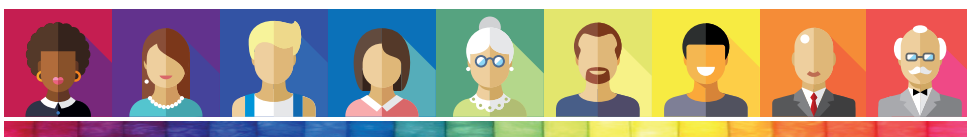
Booking deadline:  
Tuesday 8<sup>th</sup>  
October 2019

Tuesday 5<sup>th</sup> - Thursday 7<sup>th</sup> November 2019  
The Park Royal Hotel, Stretton, Warrington

In conjunction with



THE PHONAK ACADEMY



**This is an introductory course to Paediatric Assessment (Behavioural Testing). The course is for Audiologists who are beginning to work in Paediatric Testing or who would like an update on current test protocols.**

The course will be of interest to professionals who work with audiologists and who wish to gain an insight into Paediatric Assessment clinics. It is also appropriate as a short focused orientation for non-graduates (including associate and assistant practitioners) who may be assisting in paediatric clinics.

The course covers all the main behavioural tests, including speech discrimination testing and VRA using insert earphones and bone conduction. It also includes introduction to history taking, planning the session, calibration and room set-up, management decisions and report writing.

During the course, delegates will receive appropriate national guidelines for Paediatric Testing.

The course does not cover objective testing, advanced practice or assessment of complex cases.

## Accommodation and Travel

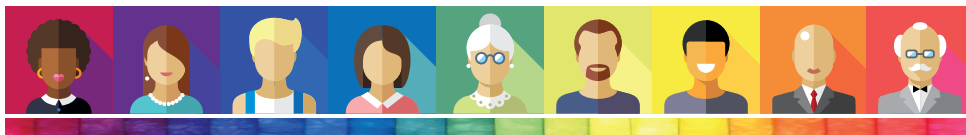
This is a non-residential course; delegates are responsible for booking their own accommodation. Accommodation costs are not included in the course fee.

The course venue is The Park Royal Hotel, Stretton Road, Stretton, Warrington WA4 4NS. This is on the outskirts of Warrington, a 15-20 min taxi ride from Warrington town centre. Booking accommodation close to the venue (rather than commuting from Warrington town centre) is advised. Recommended places to stay are The Park Royal Hotel and the adjacent Premier Inn Warrington South, Tarporley Road, Stretton.

The course fee includes evening dinner on the Tuesday evening of the course.

Driving into and out of Warrington can be subject to considerable delay during rush-hour. We therefore recommend staying over in Warrington rather than driving daily. Where the latter is unavoidable, please leave plenty of time for your journey.

Leaving the course early on the final afternoon is not advised. Train travel from the Warrington stations should be booked for no earlier than 4.45pm.



## Course Faculty

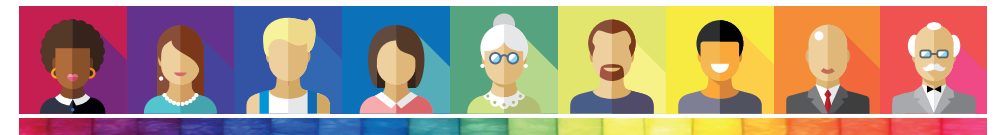
- Georgie Hill** Clinical Scientist,  
Sheffield Children's Hospital NHS FT, Sheffield
- Adam Walker** Clinical Scientist (Audiology),  
Trafford Hospitals, Manchester University NHS FT, Manchester
- Dr Greg Nassar** Principal Clinical Scientist (Audiology), Head of Audiology Services,  
Trafford Hospitals, Manchester University NHS FT, Manchester
- Kathryn Woolley** Head of Audiology,  
Leighton Hospital, Crewe
- Kathryn Lewis** Head of Audiology,  
Withington Community Hospital, Manchester University NHS FT,  
Manchester
- Jonathan Proffitt** Senior Calibration Engineer (Audiology),  
Withington Community Hospital, Manchester University NHS FT,  
Manchester
- Dr Marc Spinoza** Speciality Grade Doct in Community Paediatrics,  
Hackney and Homerton Hospital, London
- Graham Hilton** Head of Professional Services,  
Phonak UK

## Course Content

Paediatric Development Syndromes and Disorders Child Protection Issues Calibration Essentials	Planning the Session History Taking Management Decisions Report Writing Communicating with Parents	VRA Distraction Testing Play Audiometry Speech Discrimination Testing Tymanometry and Reflexes
--------------------------------------------------------------------------------------------------------	----------------------------------------------------------------------------------------------------------------	------------------------------------------------------------------------------------------------------------

In conjunction with 

THE PHONAK ACADEMY



# Anne Davies



# AUDIOLOGY



## Registering for the course

To register on the course, please complete the online course registration at:

[www.audiology-courses.co.uk](http://www.audiology-courses.co.uk)

Click on the course title, and then 'register now'.

### Methods of Payment:

**Purchase Order number and invoice address** (supplier: Anne Davies Audiology Courses)

**Cheque** (payable to Anne Davies Audiology Courses)

**Credit / debit card**

**Monthly instalments by direct debit (UK customers).** Two payments of 50% over two months, or three payments of 33.3% over three months, interest free.

If you are travelling from overseas and require a visa: once you register and pay, we can provide a letter confirming your place on the course. Please contact us to discuss.

### For enquiries, please contact:

Anne Davies

Principal Clinical Scientist (Audiology)

**Email:** [anne@audiology-courses.co.uk](mailto:anne@audiology-courses.co.uk)

**Tel:** 07985 075428

[www.audiology-courses.co.uk](http://www.audiology-courses.co.uk)

In conjunction with



THE PHONAK ACADEMY

