

# Anne Davies



# AUDIOLOGY

The **1<sup>st</sup>**

## Paediatric Hearing Aids: An Introduction

An Introduction / Update on Clinical Skills for Paediatric Habilitation

**A workshop on the final morning will involve:**

Phonak, Oticon and GN ReSound,  
discussing their paediatric hearing aid range.

The Phonak Roger system.

Otometrics, Interacoustics and Sivantos,  
how to perform RECDs on their equipment.

**Course  
fee:  
£298**

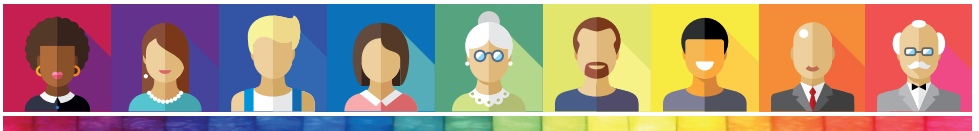
**Booking deadline:  
Tuesday 5<sup>th</sup>  
March 2019**

**Tuesday 2<sup>nd</sup> - Thursday 4<sup>th</sup> April 2019**

**Phonak UK Ltd, Sonova House, Lakeside Drive, Warrington**

In conjunction with 

**THE PHONAK ACADEMY**



**This is an introductory course to Paediatric Habilitation. The course is for Audiologists who are beginning to work in paediatric hearing aid clinics, or who would like an update.** The course will be of interest to those wishing to gain an insight into paediatric hearing aid clinics. It is also appropriate as a short focused orientation for non-graduates who may be assisting in clinics.

The course covers all aspects of routine paediatric hearing aid clinics, including strategies for testing, communication skills, hearing aid provision with limited threshold information, verification and outcome measures, wireless accessories, and working in multi-disciplinary teams.

The course does not cover advanced practice, assessment of complex cases, or paediatric assessment techniques.

On the final morning of the course there will be a workshop on paediatric hearing aid technology, and RECD measurements. The following manufacturers will be involved: Phonak, Oticon, GN ReSound - paediatric hearing aid range and features. The Phonak Roger system - demonstration and discussion from Tony Murphy, Wireless Communications Specialist, Phonak UK. Otometrics, Interacoustics, Sivantos - how to perform RECD measurements on this equipment.

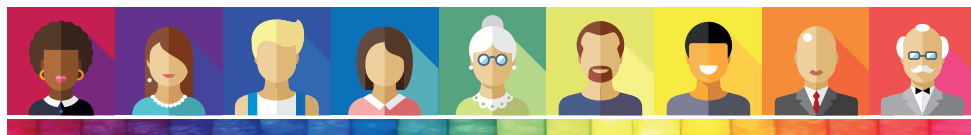
## Venue and Accommodation

This is a non-residential course; delegates are responsible for booking their own accommodation. Accommodation costs are not included in the course fee.

The course venue is Sonova House, Lakeside Drive, Warrington, WA1 1RX. This is situated in Warrington town centre. 'Premier Inn, Warrington Centre' and 'The Village Hotel Club, Warrington' are a short walk from the Phonak offices. There are a number of other hotels and bed & breakfast within close proximity in central Warrington.

The course fee includes evening dinner on the Tuesday evening of the course.

Driving into and out of Warrington can be subject to considerable delay during rush-hour traffic. We would therefore recommend staying over in Warrington rather than driving daily to the course. Where the latter is unavoidable, please leave plenty of time for your journey.



## Course Faculty

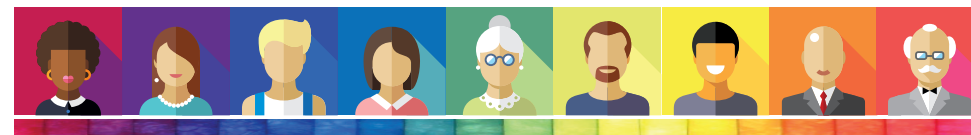
- Georgie Hill** Clinical Scientist / Children's Senior Commissioning Manager, Derbyshire CCG, Chesterfield
- Dr Greg Nassar** Principal Clinical Scientist (Audiology), Head of Audiology Services, Trafford Hospitals, Manchester University NHS FT, Manchester
- Adam Walker** Clinical Scientist (Audiology), Trafford Hospitals, Manchester University NHS FT, Manchester
- Kathryn Lewis** Head of Audiology, Withington Community Hospital, Manchester University NHS FT, Manchester
- Kathryn Woolley** Head of Audiology, Leighton Hospital, Crewe
- Ed Brown** Consultant Clinical Scientist (Audiology), Head of Audiology, Royal Hospital, Sunderland

## Course Content

- |  |                          |                                  |
|--|--------------------------|----------------------------------|
| Preparing the Parents                  | Strategies for Testing   | Planning the Fitting & Review    |
| Difference between Adults and Children | Prescriptive Approach    | Limited Threshold Information    |
| Issues after Fitting                   | Verification             | Wireless Accessories             |
| Communicating with the Family          | Outcome Measures         | Roger System                     |
|  | Report Writing           | Introduction to Complex Fittings |
|  | Transition Services      |                                  |
|  | Multi-Disciplinary Teams |                                  |

In conjunction with 

THE PHONAK ACADEMY



# Anne Davies

# AUDIOLOGY



## Registering for the course

To register on the course, please complete the online course registration at:  
[www.audiology-courses.co.uk](http://www.audiology-courses.co.uk)

### Methods of Payment:

**Purchase Order number and invoice address** (supplier: Anne Davies Audiology Courses)

**Cheque** (payable to Anne Davies Audiology Courses)

**Credit / debit card**

### For enquiries, please contact:

Anne Davies

Principal Clinical Scientist (Audiology)

**Email:** [anne@audiology-courses.co.uk](mailto:anne@audiology-courses.co.uk)

**Tel:** 07985 075428

If you are travelling from overseas and require a visa: once you register and pay, we can provide a letter confirming your place on the course. Please contact us to discuss.

[www.audiology-courses.co.uk](http://www.audiology-courses.co.uk)

In conjunction with



THE PHONAK ACADEMY

