

Anne Davies



AUDIOLOGY



COURSES

The **8th**

Steering a True Course

Leadership and Innovation in a Changing World

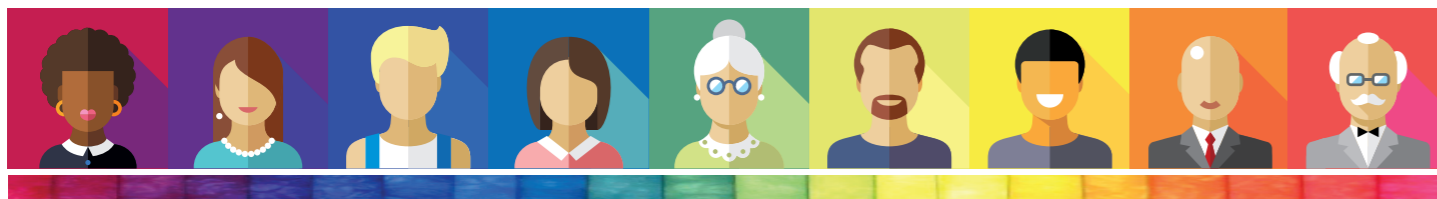
Tuesday 29th - Thursday 31st January 2019

Course Programme



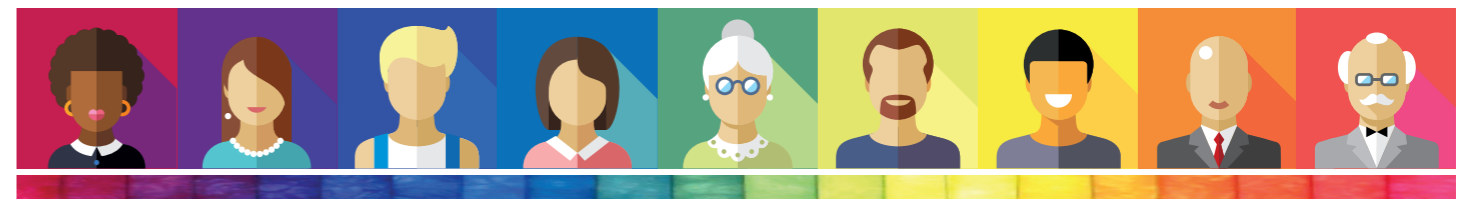
Tuesday 29th January 2019

8.45am	Registration and Coffee
9.00am	Welcome and Introduction to the Course
9.15am	Ruth Thomsen Scientific Director NHS England (London Region) Successful Outcomes Through Changing Mindsets
10.15am	Dr Jagjit Sethi Consultant Clinical Scientist, Head of Hearing and Balance Services, Clinical Director & Lead Healthcare Scientist for BHFT Berkshire Healthcare NHS Foundation Trust Into the Labyrinth of UK Health and Social Care
11.15am	Coffee Break
11.30am	Dr Christine DePlacido Senior Lecturer, Queen Margaret University, Edinburgh Preventing Burnout
12.30pm	Lunch
1.30pm	Ruth Thomsen Scientific Director NHS England (London Region) Changing Mindsets: Workshop
2.30pm	Dr Christine DePlacido Senior Lecturer, Queen Margaret University, Edinburgh Maintaining Healthy Work Relationships - What Would Freud Do?
3.30pm	Coffee Break
3.45pm	Adam Beckman Head of Audiology Services, Plymouth Hospitals NHS Trust Quality
5.00pm	Dr Jagjit Sethi Consultant Clinical Scientist, Head of Hearing and Balance Services, Clinical Director & Lead Healthcare Scientist for BHFT Berkshire Healthcare NHS Foundation Trust Mindfulness
5.30pm	Close of day
6.30pm	Evening Meal



Wednesday 30th January 2019

9.00am	Coffee
9.15am	Jonathan Parsons Managing Director, Consultant Clinical Scientist Chime Social Enterprise, Exeter Leadership - Some of What it Takes
10.15am	John Day Clinical Director of Audiology Betsi Cadwaladr University Health Board, North Wales Strategic Management in Audiology - Recognising and Influencing the Bigger Picture
11.15am	Coffee Break
11.30am	Will Brassington Consultant Clinical Scientist, University Hospitals, Birmingham Influencing Change: Can an Hour With me Really Change Your Life?
12.30pm	Lunch
1.30pm	Tony Corcoran Head of Service (retired), Bournemouth Provider Driven Service Development
2.30pm	Dr John Fitzgerald Consultant Clinical Scientist, Head of Audiological Services Norfolk and Norwich University Hospitals Making Service Development Happen
3.30pm	Coffee break
3.45pm	Jonathan Parsons Managing Director, Consultant Clinical Scientist Chime Social Enterprise, Exeter From NHS Service to Social Enterprise - Some Reflections on the Journey and Destination
4.45pm	Discussion
5.30pm	Close of day
6.30pm	Evening Meal



Thursday 31st January 2019

9.00am	Coffee
9.15am	Tony Corcoran Head of Service (retired), Bournemouth Innovation
10.15am	Professor Adrian Davis OBE Director, AD CAVE Solutions Ltd Hellish Decisions: audiology and value; confidence in the future, builds high performing teams and underpins successful networks!
11.15am	Coffee Break
11.30am	Professor Adrian Davis OBE Director, AD CAVE Solutions Ltd Hellish Decisions: audiology and value; confidence in the future, builds high performing teams and underpins successful networks!
12.30pm	Lunch
1.30pm	Will Brassington Consultant Clinical Scientist, University Hospitals, Birmingham Leadership - The Uncut Guide!
2.30pm	Coffee, Discussion, Feedback on Course
3.30pm	Close of Course

Chairs of Course

Tony Corcoran
Head of Service (retired), Bournemouth

Darren Whelan
International Clinical Trainer, Interacoustics A/S

